

GELIDA 47

AN INTELLIGENT LN2 TANK

A liquid nitrogen storage system with 24/7 wireless monitoring



Wireless sensors monitor real-time temp. and LN2



Real-time audio, visual and digital alarms



Visual tank alert for sample location*



Remote tank management with PDA and App



Single or dual tank access authentication



Centralized management via BaseStation software



Model	LN2 Capacity	Canister/Rack Capacity	Straw/Tube Capacity
Gelida 47 for straws	47 Liters	10 Canisters	Up to 1250 Straws
Gelida 47 for vials	47 Liters	6 Box Racks/30 boxes	750 Tubes

*Only available on Professional version

- **Wireless:**

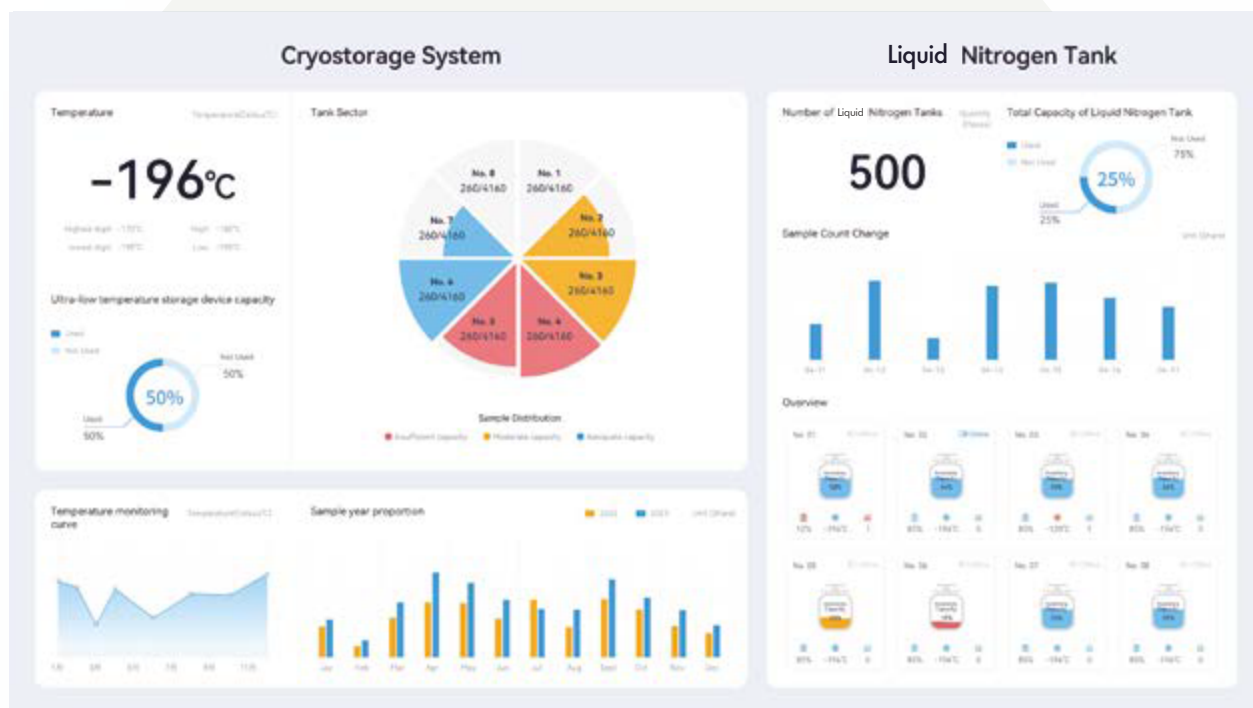
- Real-time PDA tank monitoring and reporting.
- Automatic BaseStation App alarm and warning notifications.
- Tank, canister, cane/box, and sample locations displayed on PDA.
- Zero external tank wiring.

- **Security:**

- Automatic logging of all alarms and warnings.
- Two internal tank LN2 sensors (high and low).
- All lid openings/closings are logged.
- Optional password requirement for lid openings

- **Convenience:**

- Remotely lock and unlock multiple tanks at once.
- Quick recall of tank condition and status.
- Real-time monitoring, alerts and warnings on devices.
- Intelligent touchscreen design of tank lid with quick swap battery access.



GELIDA 47 CONFIGURATIONS

MODEL	GELIDA 47 (STRAWS)	GELIDA 47 (VIALS)
Capacity	47 L	
Bare weight	44 lbs (~20 kg)	
Full weight	128 lbs (~58 kg)	
Neck diameter	5 inches (127 mm)	
Outer diameter	19.685 inches (Approx 500 mm)	
Height	31.69 inch (Approx 805 mm)	
Storage container type For the straws, LxDiameter and vials DxWxH	Canister per tank 10.95 x 2.83 inches 278 x 72 mm	Racks per tank 3.07 x 3.07 x 2.32 inches Box Size 78 x 78 x 59 mm
Amount	10 L	6 L
Screen size	5-inches colour 1280 x 720 capacitive multi touch	
Power supply	Battery: 5VDC Lithium Polymer Battery Charging Adapter: 100-240V~50/60Hz,0.5A	
Charging Hub	Charging slots for up to 5 batteries	
Battery	1 spare battery Battery life up to 15 days	
Unlocking mode	Digital password lock (single/dual authentication) Emergency access key	
Operation log	Automatic recording	
Alarms	Out of range temperature Low battery/loss of electricity Excessive tank open time	
Mode of data transmission	WiFi 802.11b/g/n AES-256 encryption algorithm	
Number of temperature sensors	2 sensors High position and low position within tank dewar Storage temperature -196 C Liquid Phase LN2	

Specifications for USA market are subject to regulatory approval and final product release.

GELIDA 47 BASESTATION SOFTWARE

GELIDA BASESTATION SOFTWARE

All your cryotank information, visualised in one place. Centralised management and monitoring enables a quick view of the temperatures, capacity, battery level, and alarms.

Tanks can be remotely controlled and located through the interface, offering features such as remote single/multi-tank unlocking and "find my tank."



BASESTATION App Remote monitoring and alerts.

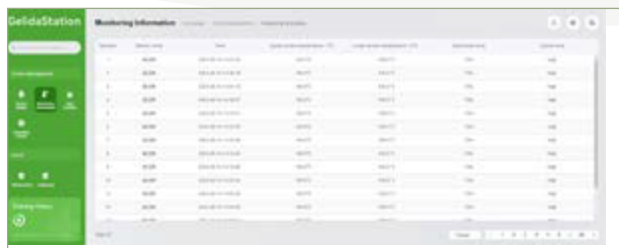
The BaseStation App can be installed on Android mobile devices, enabling a faster response when abnormal conditions arise. Remotely view tank status, such as tank temperature, capacity, notification and alarm information.



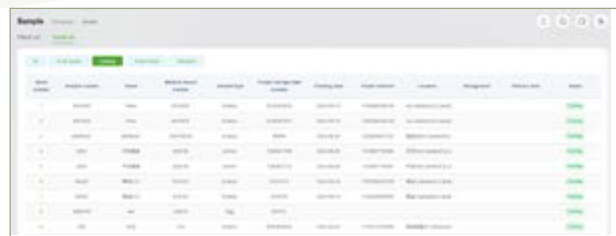
GELIDA BASESTATION PDA BaseStation features in the palm of your hand.

The BaseStation PDA is a mobile workstation. Users can monitor tanks. Add, remove and locate samples from inventory, plus lock and unlock tanks from this hand-held device. Create sample deposit and withdraw samples, and identify sample location on the screen; the inbuilt precision saves time and supports error reduction efforts.





Device Management: Add, remove or edit basic device information, view tank capacity, tank status information, alarms, and retrieve access/operation records.



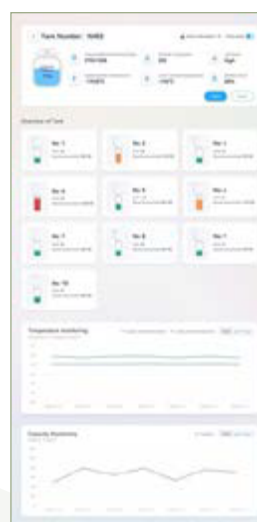
Single Sample Tracking: Sample information can be viewed and filtered, using name, freeze date and time, sample unique ID, with traceability down to location where a single sample is stored within a tank.



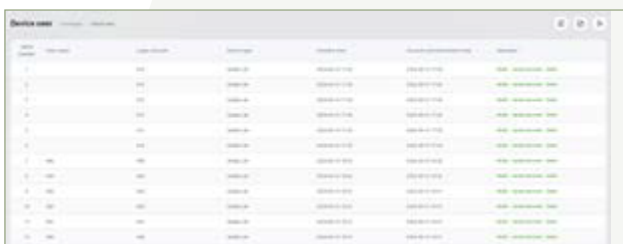
Sample Status: Add and withdraw samples, select where to store a single sample, which samples to take out, and record all access statistics for trackability.



Alert Information: You can view the alarm status of all devices, including the device name, alert time, location, alert content, issued notifications, alarm history, and whether the alarm is resolved.



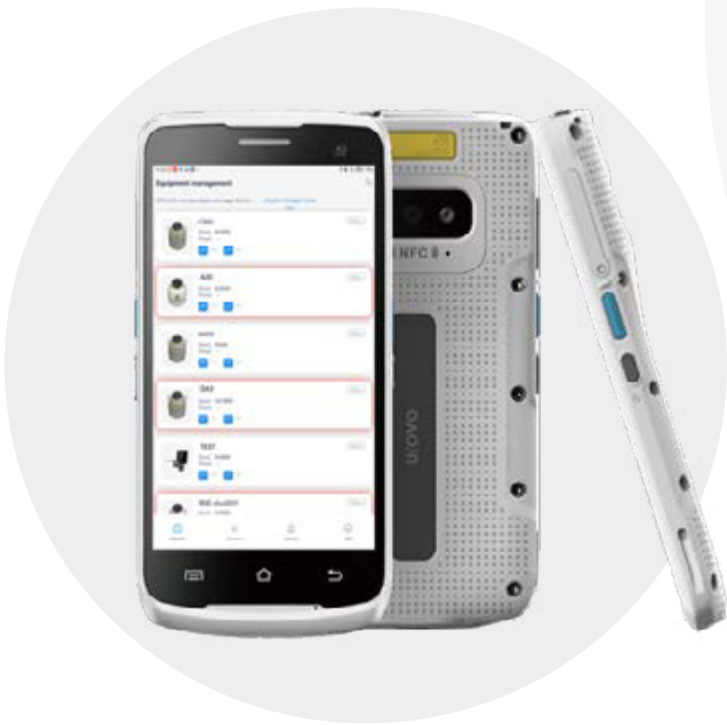
Simplified Visuals: Quickly view the temperatures, capacity, battery level and alarms. Devices can be remotely controlled and quickly located; features include remote single/batch unlocking, and "Find My Tank".



User Management: Manage authorised users for all tanks in a central location. User names and passwords can be updated, deleted, and synced to all connected tanks.

Final appearance of features are subject to change; may vary depending on specific customer implementations, version of software and lab integrations.

The **Gelida System** enables lab staff to manage patient's samples all within the palm of their hand.



PRODUCT NAME	TYPE	CONFIGURATION
Gelida 47 BaseStation System	Package	Gelida BaseStation Software, Gelida BaseStation PDA; App
Gelida 47 BaseStation Software Basic	Software	Software (Centralised management of devices)
Gelida 47 BaseStation Software Professional	Software	Software (Centralised management of devices and samples)
BaseStation PDA	Accessory	-
App	Accessory	Only available on Android